

Celebrating



of Partnership for the Environment

GLOBAL ENVIRONMENT CENTRE



**Global Environment
Centre**

We would like to express our *thanks* to all of our amazing supporters.

Thank you for your continued support and trust in our work and efforts.

You have been critical to our growth and success, and **we look forward to working with you in the coming years.**

A: 2nd Floor, Wisma Hing, 78, Jalan SS2/72,
47300 Petaling Jaya, Selangor Darul Ehsan, Malaysia

T: +60 3 7957 2007 **F:** +60 3 7957 7003

E: outreach@gec.org.my

Acknowledgements	2
Messages	3
About GEC	4
GEC in the Map	5

GEC Key Achievements **6**

Environmental Programme: **6**

River Care	7
Forest and Coastal	8
Peatland	9

GEC in 20 Years **10**

Public and Community Empowerment: **12**

Friends of River Care	12
National River Care Fund (NRCF)	12
Sahabat Hutan Bakau (SHB)	13
Sahabat Hutan Gambut (SHG)	13

Environmental Education: **14**

SMART Ranger Programme	14
RIVER Ranger Programme	14
DRH2O Programme	14
Peat Forest Ranger (PFR) Programme	14
River Open Classroom	15
Community Sustainable Peatland Centre (CoSPEC)	15

Expanding our Environmental Footprint: **16**

GEF-CSO Network	16
GEC in Indonesia	16

Messages from Partners **17**

Contribution **21**

GEC gratefully acknowledges the support and generosity of many partners and funders who have supported GEC's work over the last 20 years. The Board, Council and Management as well as the key partners and funders include:

GEC BOARD MEMBERS

En Zainudin Bin Ismail and Prof Mohd Ali Bin Hashim.

ADVISORY COUNCIL MEMBERS

Tan Sri Dato' Dr Razali Ismail, Dato' Dr Wong Sai Hou, Datuk Zul Mukhshar Bin Dato' Md Shaari, Dato Ir Lim Chow Hock, Prof Emeritus Tan Sri Dr Zakri A. Hamid, Mr. Delmar A. Blasco, Dr Salmah Zakaria, Dato' Halimah Bte Hassan, Mr. Chow Kok Kee, Mr. Effendi Sumardja and Ms. Akiko Domoto.

MANAGEMENT TEAM

Faizal Parish, Victoria Louis, Nagarajan Rengasamy, Dr. Kalithasan Kailasam, Serena Lew, Adelaine Tan, Chee Tong Yiew, Suzana Mohkeri, Balu Perumal and Fuad Shariff.

INTERNATIONAL

ASEAN Australia Development Corporation Programme (AADCP); ASEAN Regional Centre for Biodiversity Conservation; Asia Pacific Network for Global Change (APN); ASEAN Secretariat; AusAID; Canadian High Commission, Malaysia; Canadian International Development Agency; DANIDA, Ministry of Foreign Affairs, Denmark; Department of Environment and Natural Resources (DENR Philippines; Department for International Development UK; Directorate General for International Cooperation, Netherlands; Earth Watch institute (Hong Kong); Europe China Biodiversity Programme; European Commission; FFI International; GEF-CSO Network; Global Environment Facility; GEF SGP Malaysia; Global Peatland Initiative, Global Water Partnership, Global Water Partnership South-East Asia (GWPSEA); International Fund for Agricultural Development (IFAD); International Mire Conservation Group (IMCG); International Peat Society; Keidanren Nature Conservation Fund, Japan; Low Emission Development Strategies (LEDS) Global Partnership; Ministry of Environment, Cambodia; Ministry of Environment and Forestry, Indonesia Ministry of Natural Resources and Environment (MONRE Lao PDR); Ministry of Natural Resources and Environmental Conservation (MONREC Myanmar); Ministry of Development, Brunei Darussalam; Ministry of Natural Resources and Environment, Thailand; National Environment Agency (NEA Singapore); Netherlands Embassy, Malaysia; Nordeco; PM Haze Movement, Singapore; Proforest; Ramsar Convention Secretariat; Secretariat of the Biodiversity Convention; State Forestry Administration China; United Nations Development Programme; United Nations Environment Programme; US Forest Service; US State Department; Vietnam Environment Administration (VEA); Wetlands International (HQ, China, Indonesia, Russia, South Asia and Thailand); Wildlife Habitat Canada and Winrock International.

UNIVERSITIES

LESTARI, Universiti Kebangsaan Malaysia; Liverpool John Moores University; United Nations University; Universiti Malaya; Universiti Putra Malaysia; Universiti Tun Abdul Razak; University of Nottingham, UK & Malaysia Campus; and University of Queensland.

MALAYSIAN FEDERAL & STATE GOVERNMENT

Department of Environment; Department of Irrigation and Drainage; Environment Action Committee, Sabah; Forestry Department of Peninsular Malaysia and its State Forestry Departments (Johor, Pahang, Perak and Selangor); Institute Darul Riduan; Malaysian Meteorological Department; Ministry of Education; Ministry of Energy, Science, Technology, Environment and Climate Change; Ministry of Housing and Local Government; Ministry of Water, Land and Natural Resources; Ministry of Youth and Sports; Natural Resources and Environment Board (NREB Sarawak); Royal Malaysian Navy; Sabah Forest Department; Forest Department Sarawak; Selangor State Government and Suruhanjaya Perkhidmatan Air Negara (SPAN).

LOCAL GOVERNMENT / AUTHORITIES

Ipoh Municipal Council; Lembaga Urus Air Selangor (LUAS); Klang Municipal Council; Kuala Lumpur City Hall; Kuala Selangor District Council; Kuala Selangor District Office; Manjung District Office; Manjung Municipal Council; Petaling Jaya Municipal Council; Sabak Bernam District Office; Sabak Bernam District Council and Shah Alam Municipal Council.

CORPORATES

99 Speed Mart Sdn Bhd; Aidenvironment; Aramco Asia Singapore Pte Ltd; Bridgestone Corporation Sdn Bhd; BOH Plantations Sdn Bhd; Bunge Lodders Crocklaan; Canon Malaysia; Chemopharm Sdn Bhd; CIMB Bank; Croesus IT Solution Sdn Bhd; Cuscapi Berhad; Digi Telecommunications Sdn Bhd; Ecofields Pte Ltd; Ericsson (M) Sdn Bhd; Fuji Elektrik; Gamuda Land; HSBC Malaysia; IGB REIT-TGM; Innisfree Malaysia; IOI Corporation Berhad; IWK; Master Pyroserve Sdn Bhd; Maybank Berhad; Netsprint Sdn Bhd; Respol Malaysia Sdn Bhd; Scomi International; Shell Malaysia; Sime Darby Plantations; Spritzer Malaysia Sdn Bhd; Takaso Rubber Products Sdn Bhd; Timberland; Tan Sri Razali Ismail (KALAM); The STAR Media Group; Toyota Malaysia; United Way/Fedex; UPS (M) Sdn Bhd; Vale Minerals (Malaysia) Sdn Bhd and Via Natura Sdn Bhd.

FOUNDATIONS

Coca-Cola Foundation; SPARK Foundation; Toyota Foundation; Yayasan Bursa Malaysia; Yayasan Hasanah and Yayasan Sime Darby.

NGOS / CBOS

Friends of Bukit Kiara; FOMCA; Green Earth Society; Friends of North Selangor Peat Swamp Forest; Friends of Kuala Langat Peat Swamp Forest; Friends of Kuala Gula Mangrove; Friends of Lekir Sitiawan Mangrove; Friends of Kampung Dato Hormat Mangrove; Friends of Tanjung Surat Mangrove; Malaysian Climate Change Group (MCCG); MENGO; MNS; MYCDNET; MyCountry Water Partnership; MyWater Partnership and WWF Malaysia.



**Yang Berhormat
Dr. Xavier Jayakumar**

Minister

MINISTRY OF WATER, LAND AND NATURAL RESOURCES MALAYSIA

Addressing present challenges for environment and natural resources requires an integrated approach. With the changing climate and increased pressure on our resources, we are facing more fires, floods and droughts; loss of forests and biodiversity as well as increased pollution. It is not possible for merely a single agency or a stakeholder to work alone to overcome these challenges. We need everyone to work together.

The Ministry of Water, Land and Natural Resources (formerly the Ministry of Natural Resources and Environment) along with its agencies have worked since 2004 with the Global Environment Centre (GEC), to bring together different stakeholders to address a range of issues including community-based forest and mangrove restoration; integrated peatland management and fire prevention and control; and multi-stakeholder engagement in river protection and rehabilitation.

GEC has helped facilitate the engagement of local communities and the private sector, demonstrating that they can make a difference when they join hands with civil society and the government to address common challenges.

I congratulate the Global Environment Centre for 20 years of numerous achievements in conserving our natural resources and building a strong partnership for our environment. We look forward to what can be achieved in the next 20 years.



Zainudin Ismail
Co-founder and Chairman

GLOBAL ENVIRONMENT CENTRE

December 2018 marked Global Environment Centre's 20th anniversary since its establishment in 1998. From a small beginning, we have built up to be a significant force for promoting environmental sustainability.

The road to sustainability is long and tough, but, we are determined to succeed. Our strength comes from a team of dedicated and passionate staff together with the partnerships we have forged with governments, communities, private sectors and like-minded organisations. But, what makes this possible is support from our key funders, partners and supporters.

Moving forward, we will continue to empower local governments and communities in ASEAN region to conserve peatlands and prevent fire and haze; replicate success of our river and forest conservation efforts to other parts of Malaysia and the region; and improve socio-economic conditions of communities by introducing sustainable alternative livelihood options.

To all our funders, partners and supporters, we thank you again for your generosity and your exceptional commitment in supporting GEC. We look forward to working with you on advancing our mission and creating a sustainable world over the next 20 years.



Faizal Parish
Co-founder and Director

GLOBAL ENVIRONMENT CENTRE

Since 1998, Global Environment Centre has been working passionately in protecting our environment and building multistakeholder partnerships. Key achievements include:

- Helping to secure recognition globally for the importance of peatland ecosystems for biodiversity and climate change.
- Establishing and implementing the ASEAN Peatland Management Strategy 2006-2020 to guide the sustainable management 20 million hectares of peatland in ASEAN.
- Rehabilitating 300 hectares of mangrove and peatland forests with 54,000 volunteers and local community members.
- Pioneering community-based river rehabilitation, water conservation and waste management approaches.
- Coordinates regional and global networks to link civil society organisations and others to safeguard the global environment.

Our achievements described in the following pages are the result of partnerships with many people and institutions, volunteers and many more. We thank them all!

ABOUT GEC

Global Environment Centre (GEC) was established in 1998 to work on environmental issues of global importance. The Centre is based in Malaysia and registered as a non-profit, Non-Governmental Organisation (NGO) and works regionally and internationally both directly and through many partners.

Currently, GEC is working in over 10 countries which include ASEAN countries and China.

Our key focus is to protect and safeguard the global environment by developing smart partnerships through engagement and empowerment of multiple stakeholder-government bodies, private sectors and local communities. We believe that community-led development and empowerment is the key to run impactful environmental activities as communities are the guardians of our global environment.

MISSION

To support the protection of the environment and sustainable use of the natural resources to meet local, regional and global needs, through strategic partnerships with communities and like-minded organisations.

OBJECTIVES

- To promote the integrated management of biodiversity and water resources with a focus on community involvement and biodiversity conservation;
- To promote the protection and sustainable use of forests and wetlands with a focus on integrated management for biodiversity and climate change; and
- To enhance awareness, understanding and capacity as well as partnerships between different organisations and sectors to address environmental issues.





OUR FIELD PROJECT LOCATIONS

RIVER CARE PROGRAMME

Sungai Pinang, Sungai Kinta, Sungai Penchala, Sungai Klang, Sungai Nenggiri, Sungai Paloh, Salut-Mongkabong River, Kelana Jaya Lakes, Pulau Pangkor

FOREST AND COASTAL PROGRAMME

North Selangor Peat Swamp Forest, Kuala Langat PSF, Manjung Mangrove Forest, Kuala Gula Mangrove Forest, Sabak Bernam Mangrove Forest, Pulau Tanjung Surat Mangrove, Meliau Range, Pulau Sembilan.

PEATLAND PROGRAMME

Malaysia (Selangor, Pahang, Sabah, Sarawak), Indonesia (Acheh, Central Kalimantan, West Kalimantan, South Sumatra, Riau), Cambodia (Peam Krasop Wildlife Sanctuary), Lao PDR, Brunei Darussalam, Myanmar (Inle Lake), Philippines (Leyte Sab-a Basin and Caimpugan, Agusan Marsh), Thailand, Vietnam (U Minh Thuong and U Minh Ha National Parks) and China (Cixi Wetland Centre, Ruorgai Plateau, Heilongjiang, Dongting Lake, Yancheng National Nature Reserve).

ENVIRONMENTAL PROGRAMME

For the past
20 years,
GEC has
implemented



>150

projects
successfully in

>20

COUNTRIES

...working on environmental issues with a strong focus on river basins, wetlands, biodiversity and climate change.

We have worked together in synergic with many partners and stakeholders to realise sustainable solutions to our environment.

Our key achievements are as laid on the followings pages.



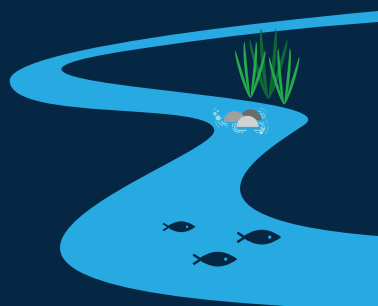
RIVER CARE



GEC is committed to provide a better understanding about the importance of our rivers and appreciate the value of them. Therefore, we established an environmental program entitled the **River Care Programme (RCP)** to focus on promoting stakeholder especially community participation in river and water resource protection and sustainable use through the **Civic Science approach**.

Through the RCP, GEC has collaborated and established a close nexus with many partners including government agencies, corporates, educational institutions, communities and NGOs to design, initiate and establish various river care activities with primary focus to include communities as the key stakeholder. As the result, various river care initiatives such as River Care Education Centre, My Drains Day, and RIVER Ranger Jamboree and projects such as Public Outreach Programme of River of Life, rehabilitation of Sungai Way and river education of Penchala and Kinta River under W.A.T.E.R Project have been established and implemented.

Together with our partners, GEC has been supporting



river rehabilitation work and biological restoration as well as the protection and conservation of water catchments.

In order to impart our knowledge and expertise on river rehabilitation and conservation, GEC has written and published various guidelines, handbooks, modules and booklets to be shared to the global audience. Some of our notable publications are:

- Urban River Management Handbook
- SMART Ranger Module and RIVER Ranger Module
- River Restoration in East Asia
- Guidelines on Integrating Wetland Conservation and Wise Use into River Basin Management
- Water Watch: A community Action Guide

GEC has also successfully designed four different environmental education modules focusing on:



SMART RANGER
Integrated solid waste management.



RIVER RANGER
River resource management.



DR H2O
Water conservation.



FLOOD RANGER
Flood disaster management preparedness.

GEC has built capacity and empowered over **260 community groups, 700 education institutions comprising of students and educators** and helped establish **20 Friends of River groups**. Participants have learned the **steps** that they can do to take on **river auditing, waste management and water auditing, flood preparedness, pollution mapping and reporting, lake management, water footprint, rain water harvesting, river restoration and rehabilitation other resource managements**.

FOREST AND COASTAL



Deforestation and degraded wetlands habitats often negatively affect the socio-economic development of a country, climate regulation and environmental stability. GEC believes by managing the forest and wetland sustainably, the negative impacts can be mitigated. Therefore, GEC established Forest and Coastal Programme (FCP) to promote and support sustainable management of our forests and wetlands. FCP aims to conserve biodiversity and mitigate climate change through awareness and rehabilitation at local, national and regional levels. Through this programme, GEC also supports international cooperation and national actions to reduce deforestation, prevent forest degradation and fires, promote a sustainable livelihood and better income among forest-dependent communities.

CONSERVATION AND REHABILITATION OF PEAT SWAMP FOREST

Over the years, Peat Swamp Forest in Selangor have been degraded with impacts on biodiversity, carbon emission, forestry and local communities' livelihood. To tackle this problem, GEC has collaborated with local communities, large corporations and government bodies, to initiate projects that manoeuvre and strengthen the efforts for fire prevention, rehabilitation and conservation. The projects mainly operate at North Selangor Peat Swamp Forest (NSPSF) and Kuala Langat North Forest Reserve (KLNFR).

As a result, large part of peat swamp forests have been protected and forest fires incidents and haze has been reduced by 90% in recent years.

On 22nd September 2017, Raja Musa Forest Reserve (located in NSPSF) was granted Queens Commonwealth Canopy accreditation by the Queen's Commonwealth Canopy (QCC) partnership with the Royal Commonwealth Society and Cool Earth and the Commonwealth Forestry Association. This is the first accreditation for Malaysia after QCC was launched at the Commonwealth Heads of Government Meeting, in 2015.

Through best management practices, GEC has rehabilitated

>200 HECTARES DEGRADED PEAT SWAMP FORESTS

300,000
TREES PLANTED



WITH
30,000
VOLUNTEERS
(civil societies & corporate bodies)

CONSERVATION AND REHABILITATION OF MANGROVE FOREST

Since 2007, GEC has initiated various mangrove restoration and conservation projects in Selangor, Perak and Johor states while building sustainable livelihood options for the coastal communities.

Currently, GEC is engaging actively with the local communities conserve mangrove areas in Kuala Gula, Sabak Bernam, Lekir (Setiawan), and Tanjung Surat.

GEC has rehabilitated

>100 HECTARES DEGRADED MANGROVE AREAS

250,000
TREES PLANTED



WITH
24,000
VOLUNTEERS
(local communities, public & corporate bodies)

PEATLAND



GEC IS THE

FOUNDING COLLABORATIVE PARTNER OF

ASEAN PEATLAND MANAGEMENT INITIATIVE & ASEAN PEATLAND MANAGEMENT STRATEGY

which provides a roadmap for peatland management in...

23 MILLION HA OF PEATLANDS IN SEA

and continues providing technical and operational support to ASEAN Member States.

GEC promotes sustainable management of peatlands and works closely with various stakeholders to promote best management practices in peatland management, peat fire prevention and rehabilitation.

Since 1999, GEC has demonstrated its operational and technical competencies in providing guidance for peatland management and fire prevention in nine ASEAN Member States (AMS) (Brunei Darussalam, Cambodia, Indonesia, Lao PDR, Malaysia, Myanmar, Thailand, Philippines and Vietnam) by working closely with various government agencies, NGOs and the private sector.

ASEAN PEATLAND MANAGEMENT STRATEGY (APMS)

- GEC was endorsed by the ASEAN Member States in 2006 as the lead technical and operational support partner for the APMS.
- Under the framework of APMS, Global Environment Facility (GEF) through the International Fund for Agricultural Development (IFAD) and the European Union (EU) through GEC have funded ASEAN Peatland Forests Project (APFP) and SEApeat Project respectively seeking to develop community capacity in fire prevention and sustainable management of peatlands in 10 AMS.
- GEC has facilitated numerous workshops, meetings and exchanges as well as played a key role in generating resources to support the development and implementation of the strategy.
- Combined, the projects have successfully documented 35,000 hectares of new peatlands, reduced degradation of peatlands in SEA and engaged over 900 participants in training and workshops as well as developed 35 awareness materials in 7 languages.
- Following the completion of both projects by 2015, a scaled-up programme to maintain and sustain the efforts invested during both projects has proceeded with the establishment of ASEAN Programme for Sustainable Management of Peatland Ecosystems (APSMPE). The aims are to enhance local community engagement and support their livelihoods, reduce the risk of fire and haze as well as contribute to environmental management.

1998

GEC was established.

1999

Guidelines for integrating wetland conservation and wise use into river basin management developed by GEC were formally adopted by 140 countries at the 7th Conference of Parties of the Ramsar Convention on Wetlands.

GEC initiated its work on **sustainable peatland management** to address the massive problem of transboundary smoke haze in ASEAN.



2000

The River Basin Initiative (RBI) developed with support of GEC was launched by the Ramsar Convention Bureau and Convention on Biological Diversity (CBD) Secretariat at the CBD COP5 in Nairobi in May 2000.

2003

ASEAN Member States (AMS) appointed **GEC as the founding collaborative partner for the ASEAN Peatland Management Initiative (APMI)** with a focus on technical and operational support.

2004

GEC developed the SMART Ranger Programme to educate Malaysians about Solid Waste Management (SWM).

GEC initiated the River Open Classroom at Bukit Kiara to educate the public on the importance of waterways and how to protect our rivers.



2005

AMS appointed **GEC as the executing agency for project development of the ASEAN Peatland Forests Project.**

GEC developed the RIVER Ranger Programme to educate Malaysians on every aspect of the freshwater ecosystem.

2006

AMS adopt the ASEAN Peatland Management Strategy 2006-2020 with **GEC appointed as the Technical and Operational Support Partner.**

GEC helped establish Sahabat Hutan Bakau (SHB) Kuala Gula to empower mangrove-dependent communities to conserve their mangroves.



2007

SPARK Foundation in partnership with GEC has initiated the W.A.T.E.R Project at Sungai Way to educate the public about the importance of water resources.

Intergovernmental Panel on Climate Change (IPCC) recognised GEC's work that contributed to their 2007 Nobel Peace Prize.

2008

The Global Assessment on Peatlands, Biodiversity and Climate Change was recognized by more than 180 country Parties to the Convention on Biological Diversity in their meeting in Germany.

GEF-CSO Network elected GEC as the Regional Focal Point for South East Asia to address environmental challenges.

GEC was engaged by Department of Environment, the Government of Malaysia to design and implement "Fire and Haze Prevention through Rehabilitation and Improved Management of Peatlands in Riau Province Sumatra, Indonesia".



2009

ASEAN appointed GEC as the Regional Project Executing Agency for ASEAN Peatland Forests Project (APFP) to facilitate a US\$25 million programme to protect and rehabilitate peatlands throughout ASEAN.

2010

GEC as Executing Agency for European Union (EU) funded Sustainable Management of Peatland Forests in South East Asia (SEApeat) Project as parallel project to complement the APFP to support peatland inventories and management in Mekong countries.

GEC co-chaired RSPO Peatland Working Group (PLWG) 2010-2012.

GEC signed an MOU with the Selangor State government to support the conservation and rehabilitation of peat swamp forests in Selangor State for the period of 2010-2013 (phase 1).



2011

GEC partnered with HSBC Bank Malaysia Berhad to rehabilitate Raja Musa Peat Swamp Forest through community participation (2011-2020).

2012

GEC launched Friends of North Selangor Peat Swamp Forest and Peatland Forest Ranger (PFR) to educate and engage the local community and school students (young minds) in peatland conservation and protection efforts.

GEC co-chaired the Roundtable for Sustainable Palm Oil (RSPO) – Emission Reduction Working Group (ERWG) 2012-2017.



2013

GEC helped establish Sahabat Hutan Bakau (SHB) Kampung Dato Hormat to empower mangrove-dependent communities to conserve their mangroves.

2014

GEC partnered with Sime Darby Foundation and Sime Darby Plantations to enhance and strengthen the efforts for fire prevention and water management, rehabilitation and conservation of the Raja Musa Forest Reserve (FC32 & FC70) adjacent to Sime Darby Plantations - Raja Musa Division (2014-2019).

GEC partnered with Vale Malaysia Minerals to protect and conserve mangrove forest and coastal resource through rehabilitation and sustainable management practices in Manjung District (2014- 2019).



2015

GEC established National River Care Fund (NRCF) as an initiative to support local interested community groups pursuing river conservation activities.

Sungai Kinta River Education Programme (in Perak) and Sungai Penchala River Education Programme (in Selangor and KL) adopted under the W.A.T.E.R Project.



GEC helped establish Sahabat Hutan Bakau (SHB) Lekir Sitiawan to empower mangrove-dependent communities to conserve their mangroves.

GEC partnered with BOH Plantations and Gamuda Land to develop community-based fire prevention at Kuala Langat North Forest Reserve, Kuala Langat District, Selangor (2015-2020).



2016

Department of Irrigation and Drainage Malaysia has appointed GEC to lead the River of Life Public Outreach Programme Phase 5 to empower key stakeholders in protecting rivers in the western portion of Kuala Lumpur.

GEC signed an MOU with the Selangor State government to further support the conservation and rehabilitation of peat swamp forests in Selangor State for the period of 2016-2023 (phase 2).

GEC co-chaired RSPO Peatland Working Group (PLWG) 2016-2019.

GEC co-organised IMCG Field Excursion in Malaysia and Brunei Darussalam with 29 peat scientists and experts from 14 countries around the world - the first IMCG field excursion in tropical peatland in Southeast Asia.



2017

GEC appointed to revise and update the RSPO Best Management Practices Manuals on: i) existing oil palm cultivation on peat; and ii) management and rehabilitation of natural vegetation associated with oil palm cultivation on peat.



2018

GEC launched Sahabat Hutan Gambut Kuala Langat Utara (SHGKLU) to rehabilitate and conserve peatland forest.

Community Sustainable Peatland Centre (CoSPeC) was launched to engage and empower Kampung Raja Musa villagers on peatland sustainable management at RMFR.

GEC helped establish Sahabat Hutan Bakau (SHB) Tanjung Surat to empower mangrove dependent communities to conserve their mangroves.

GEC partnered with Saudi Aramco to empower the local communities to improve their livelihood through a mangrove forests conservation and rehabilitation in Sungai Johor.



GEC's 20th Anniversary.

GEC IN 20 YEARS

PUBLIC AND COMMUNITY EMPOWERMENT



Through strategic and dynamic partnerships, GEC has empowered more than 85 community groups through various pioneering programmes and projects which have increased their capacity to safeguard and restore natural resources. The following pages show some of GEC's programmes that successfully engage local communities.



FRIENDS OF RIVERS

To empower and maximise the involvement of local communities in protecting and conserving the rivers, GEC has established various community groups including Friends of Sungai Penchala, Friends of Sungai Pagoh, Friends of Kelana Jaya Lake, Friends of Klang River Basin, Sahabat Sungai Nenggiri and more.

Each group comprises of like-minded local communities who care about the state of rivers in their areas. They have taken ownership of their respective river basins by monitoring, adopting, reducing pollution and implementing the best management practices. Overall, they have become the spokespersons as well as eyes and ears for the rivers.

Equipped with GEC's knowledge transfer on best management practices for rivers, their highly committed outlook have resulted in some of them become the care-takers as well as resource personal and facilitators for certain agencies.

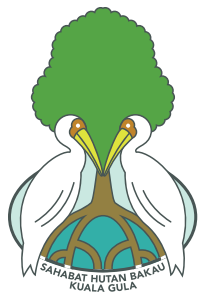


NATIONAL RIVER CARE FUND (NRCF)

NRCF is the brainchild of GEC and aims to support interested local community groups or organisations to pursue their own river conservation activities such as river protection, river monitoring, capacity building through education and awareness and many more.

Living up to its name, NRCF grants fund to deserving community groups to conduct and lead the above-mentioned activities on their own with guidance from GEC.

Established in 2015, the programme has engaged 35 community groups/ organisations, supporting actions on over 20 rivers across Malaysia and channeling over RM250,000 to 40 river rehabilitation and conservation activities and trainings.



SAHABAT HUTAN BAKAU (SHB)

SHB or Friends of Mangrove is a community-based programme initiated by GEC. It was equally spurred by the awareness and concern voiced by the local communities whose livelihoods depend on the mangroves. Over the years, they have witnessed an alarming change of mangroves and its ecosystem which affects their lifestyle.

To combat this problem, GEC in collaboration with government agencies and local authorities established Sahabat Hutan Bakau Kuala Gula (SHBKG) in late 2006 to rehabilitate 500 hectares of degraded mangrove while increase the economic value of local areas. Since then, GEC established three more SHB programmes namely, Sahabat Hutan Bakau Kampung Dato Hormat (SHBKDH), Sahabat Hutan Bakau Lekir Setiawan (SHBLS) and Sahabat Hutan Bakau Tanjung Surat (SHBTS).

These projects have increased the economic value for the local communities by establishing mangrove nursery, ecotourism and developing mangrove-based products. They are taught to conduct rehabilitation, protection and management of mangroves, as well as act as enable public awareness activities.

At SHBKG for example, more than 100,000 mangrove seedlings have been planted involving about 100 visiting groups and local communities. At SHBLS, over 45,000 mangrove trees have been planted by over 5,000 volunteers from various agencies, students, corporates NGOs and as more than 50,000 mangrove seeds have been sown at the local nursery.



SAHABAT HUTAN GAMBUT (SHG)

GEC established SHG or Friends of Peat Swamp Forest to engage individuals who are concern about the state of local peatland forests and eager to take the proactive measurement to conserve and rehabilitate the degraded forests. The members consist of local residents who are taught on peatland reforestations, environmental awareness and peatland conservation and protection. A monitoring and patrolling team is also formed mainly to monitor any peatland wildfire.

The first established SHG programme is called Sahabat Hutan Gambut Selangor Utara (SHGSU) comprising members from local residents around the North Selangor Peat Swamp Forest.

To date, they have planted more than 200,000 saplings and built 100 canal blocks that help raise the water table, reduce GHG emission and enhance natural regeneration. Also, five fire occurrences at the forest were successfully suppressed with the help from the Selangor Forestry Department, Fire and Rescue Department, SHGSU members and GEC from year 2012-2018.

In October 2018, another SHG programme was launched called Sahabat Hutan Gambut Kuala Langat Utara (SHGKLU). The launching event was joined by more than 200 participants comprises of various institutions and government agencies, students and villagers. They have successfully replanted 10 hectares of degraded areas in Kuala Langat Utara and prevented fires in its area.

ENVIRONMENT EDUCATION

GEC has successfully designed and developed various environmental education programmes on natural resources which have been adopted and endorsed by the Ministry of Education and other government agencies. Through educational programmes, GEC is focusing on empowering and explaining to the local communities on what they can do to protect the environment. Our widely implemented programmes are as follows:



Start Managing All Resources Today (SMART) Ranger is an educational programme designed to be a platform for Malaysians to learn about natural and non-natural resource management focusing on solid waste management (SWM) in Malaysia.

SMART Ranger programme empowers the participants through the awareness, knowledge and skills to take action on environmental matters. This programme is also implemented in various GEC's projects due to its nature of imparting solid waste management capacity building among community groups.

The 1st SMART Ranger team was from SK Kelana Jaya in 2004. To date, the SMART Ranger initiative has received numerous supports from various stakeholders and has benefited students, teachers, local communities and corporate organisations. They have adopted the module to start taking action in managing their wastes.



RIVER Ranger is an environmental education programme which focuses on knowledge transferring about water resources including water pollution, biodiversity, functions, values and benefits to mankind.

Kick started in 2005 with 20 students in Kedah, the success of these little rangers has rippled to other schools, local residents and communities in other states to acquire the skills of monitoring rivers in its physical, chemical and biological aspects and take stand in conserving our rivers. Now, the programme and module have been adopted and duplicated by various agencies and organisation with hundreds of schools trained and benefited over the years.



Recognising Malaysians' water usage exceeds United Nations' recommended water usage of 165L/day/capita, GEC developed and designed a water conservation module complete with training and exercises called DrH2O Programme.

In 2014, GEC and HSBC Malaysia in partnership with National Water Service Commission (SPAN) and Ministry of Education (MOE) Malaysia has initiated Water Conservation Programme for Schools in Malaysia over 3 years, this project trained students from 30 schools from 5 states (Kuala Lumpur, Selangor, Penang, Kedah and Johor).

The module of this programme includes systematic water auditing, sustainable water conservation initiative and virtual water / water footprint and has resulted in many schools, organisations and agencies to adopt and duplicate the programme's module in their own environmental activities. GEC is currently in discussion with National Water Services Commission to integrate the programme at national schools.



PFR is a programme designed to educate school students (primary and secondary) on the importance of conserving and protecting peatland environment and to impart knowledge about the ecosystem through visits and demonstrations.

Introduced and implemented by GEC in 2012, this programme is the first school-level awareness programme for peat swamp forest in Malaysia in collaboration with MOE, Selangor State Forestry Department, State Education Department and District Education Office.

With the focus on instilling environmental awareness and knowledge impartment to the younger generations, schools neighbouring to both Raja Musa Forest Reserve and Kuala Langat North Forest Reserve have joined the programme. So far, a total of 200 students and 40 teachers have joined forces and benefited from this programme.



RIVER OPEN CLASSROOM

To increase public awareness on the importance of rivers and instill a sense of responsibility to protect and conserve our rivers, GEC has initiated River Open Classroom in 2004. The classroom is established at appropriate sites provide a comprehensive learning environment with four different features namely, the source of a river, a voice of the stream, meandering and living entities (micro-habitat).

Participants can have a hands-on experience on river care at the classroom which includes river water quality and biological monitoring, zero waste management and community empowerment training.

The first River Open Classroom was established at Bukit Kiara in 2004 while others are located at Taman Warisan, Taman Tugu and Urban Community Forest, Malaysia Nature Society Headquarter which is the latest addition in 2018 under ROLPOP Phase 5 project. All were established in collaboration with various partners and funders.



COMMUNITY SUSTAINABLE PEATLAND CENTRE (COSPEC)

Recently launched in June 2018, CoSPeC is a peatland and wetland learning centre established at Kampung Raja Musa, Kuala Selangor, near the Raja Musa Forest Reserve (RMFR). It is a collaboration effort between GEC, Selangor Forestry Department and HSBC Bank Malaysia Berhad as well as Friends of North Selangor Peat Swamp Forest (SHGSU)

The centre aims to give exposure and educate local communities and students in understanding the peat swamp forest ecosystem as well as the importance of peatland in tackling climate change issues and fire prevention.

Participation of the local community has enabled them to learn about sustainable management of the peatland adjacent to forest reserves as well as how they can earn an additional/alternative income source through implementation of best management practices in areas cultivated with agricultural activities and forest rehabilitation programmes.



GEF-CSO NETWORK

GEC coordinates a number of networks relating to the environment. One of our prominent actions is the partnership built with GEF-CSO Network. Established in 1995, the Network aims to establish partnerships among CSO's worldwide to ensure civil societies is effectively engaged in the work of the Global Environment Facility.

As a member of GEF-CSO Network since 1998, GEC was elected as the Regional Focal Point for SEA from 2008 to 2015 and led the Network as its Central Focal Point / Interim Secretariat from 2010 to 2017.

Through GEC's leadership, the Network has organised 14 consultations between CSOs and GEF prior to GEF Council Meetings, organised the Network's activities during GEF Assemblies in Mexico and Uruguay.

Under GEC's guidance, the Network has actively contributed to policy formulation by GEF and advocated strong public participation in all stages of GEF program implementation; in particular, the 1996 GEF Public involvement Policy and the GEF Principles and Guidelines on the engagement with Indigenous Peoples which promotes inclusion and respect of the rights of Indigenous Peoples in GEF projects.

GEF IN INDONESIA

GEC has supported activities in Indonesia since 2003 – mainly through partnership with the government or NGOs. Among the key recent projects that have been implemented include:

- Technical Support to Ministry of Environment and Forestry and IFAD for the design of the Sustainable Management of Peatland Ecosystems in Indonesia (SMPEI) 2014-2016.
- Technical Support to Ministry of Environment and Forestry and IFAD for the design of the Integrated Management of Peatland Landscapes in Indonesia (IMPLI) 2016-2018.
- Guidance for Implementation of the Indonesia Component of the ASEAN Peatland Forests Project (2010-2014).
- Advising private sector on Sustainable Management of Conservation Areas and Plantation in Peatland (IOI, Proforest, Cargill, BGA, etc.).

Envisaging GEC's role to support peatland management in the region for the next 20 years, GEC decided to enhance its programme in the Indonesia by developing GEC Indonesia Programme and is currently working on modality of establishing the programme.

For more information about our projects, including details of activities, stakeholders and available resources, please visit our website at www.gec.org.my or email at outreach@gec.org.my

The Global Environment Centre (GEC) is a long-standing partner of the Association of Southeast Asian Nations (ASEAN) in combatting peatland fires, since the early stages of peatland intervention in the region. GEC assisted to strengthen ASEAN capacity and institutional framework on sustainable development peatland management.

This resulted in the identification and assessment of large areas of peatlands in the Philippines and the Mekong countries; designation of some areas as important national, regional, and international sites. GEC is a proven key partner of ASEAN in the area of transboundary haze pollution control. The ASEAN Secretariat highly appreciates the working relationship with GEC and looks forward to future cooperation.



H.E. Kung Phoak

Deputy Secretary-General for
ASEAN Socio-Cultural Community

**ASSOCIATION OF
SOUTHEAST ASIAN
NATIONS (ASEAN)**

IFAD has been working with GEC for over 10 years implementing Global Environment Facility (GEF) and IFAD grant projects. GEC has been instrumental to sustainable peatland forest and haze pollution management within IFAD in ASEAN region through the design of strategic investments targeting smallholder farmers, capacity building of government agencies, engagement of the plantation sector, and leading policy dialogue on sustainable peatland forest management. GEC has been, and continues to be a solid technical service provider, effective interface with ASEAN member states and Secretariat, and partnership builder with local communities, development cooperation partners and the private sector.



Roshan Cooke

Lead Technical Specialist for
Environment & Climate Change

**INTERNATIONAL FUND
FOR AGRICULTURAL
DEVELOPMENT (IFAD)**

Over the years, we are witnesses to GEC's exemplary contribution to the environmental development activities both locally and globally. Much of GEC's capability to realise environmental successes stems from the organisation having headed the GEF CSO Network for more than 8 years. The lead has culminated into surmountable competitive leadership to over 500 Civil Society Organisations (CSOs) spread across the continents. Thus, it is an honour to congratulate GEC on milestones they have reached and wishes the organisation many years of contributing to the global environmental benefits!



Victor Kawanga

Chair

GEF CSO NETWORK

The Selangor State Government through the Selangor State Forestry Department (SSFD) has partnered with GEC to protect and restore peat swamp forests in Selangor since 2008. Through this collaboration, we have successfully implemented a number of conservation and rehabilitation activities. The pinnacle of this collaboration is when we successfully reduce about 90% of forest fires incidents and haze in Selangor. SSFD will continue to work closely with GEC to conserve and rehabilitate our peat swamp forests and enhance community participation. SSFD look forward to continuing our trusted and successful partnership with GEC in many more years to come!



**Dato' Dr. Mohd Puat
B. Dahalan**

Director of Selangor State
Forestry Department

**SELANGOR STATE
FORESTRY DEPARTMENT**

GEC has been actively collaborating with DID Malaysia since 2002. Together, we have conducted countless of river conservation and awareness programmes such as Community Participation in River Management in Malaysia Project, RIVER Ranger trainings and One State One River programme. All programmes conducted have been in line with the government's effort to increase awareness among the community about the importance of environment especially our rivers, the source of our country's water supply.



**Tuan Haji Md. Khairi
Bin Selamat**

Director of River Basin Management Division

**DEPARTMENT OF IRRIGATION
AND DRAINAGE MALAYSIA**

GEC brought MBPJ and me especially closer to the noble work of lake and river rehabilitation programmes. The Kelana Jaya Lake Rehabilitation Project in 2004 sparked many other river rehabilitation projects in Petaling Jaya. These include the Sungai Penchala in 2005 and the WATER project in Sungai Way just to name a few. These projects prioritised public participation and stakeholders' partnership as a critical approach apart from the engineering solution and rehabilitation works in improving the water quality of our river. Our partnership until now has blossomed and showcases to others that public engagement is important not only on river rehabilitation but other environmental aspects as well. Thank you GEC and happy celebrating 20th Anniversary.



Lee Lih Shyan

Director, Department of Solid Waste Management and Public Cleansing

**PETALING JAYA
CITY COUNCIL (MBPJ)**

HSBC Malaysia has long supported the Selangor State Government and the Selangor State Forestry Department on the rehabilitation programme of the North Selangor peat swamp forest, including the Raja Musa Forest Reserve. Since 2011, HSBC Malaysia has been partnering with the GEC and we have worked together with the Selangor State Government and the Selangor State Forestry Department towards the success of the peatland management, protection and restoration. We also had over 1300 HSBC colleagues volunteer in this meaningful and impactful programme since 2011; reflecting our commitment towards making a difference in the environment and the lives of people in the communities which we serve. I do hope that this initiative will further increase community awareness on the importance of wetlands in the tropical rainforest ecosystem and their role in tackling climate change. Congratulations on 20 years of success, with best wishes for many more!



Stuart Milne

CEO

**HSBC BANK
MALAYSIA BERHAD**

We have been collaborating with GEC to protect Malaysia's water resources since 2007. The team is highly committed, knowledgeable and effective in fostering partnerships with various stakeholders, including government agencies, local communities and business communities to create a greater, more sustainable impact. Together, we have brought changes to 5 rivers through rehabilitation efforts and education outreach programmes. As our project evolved over the years to address climate change challenges and shift to a more effective strategy, GEC was able to find solutions swiftly, which demonstrates their adaptability to change. In 2018, we started focusing on watershed protection as one of the core elements of our Water Stewardship Agenda 2018 -2020. We are pleased with the productive collaboration and looking forward to spark a greater change in conserving our most valuable resource.



Renuka Indrarajah

Corporate Affairs and Legal Director of Heineken Malaysia Berhad and Trustee of SPARK Foundation

SPARK FOUNDATION

Yayasan Sime Darby is proud to be collaborating with the Global Environment Centre on the protection, conservation and rehabilitation efforts at the Raja Muda Forest Reserve since 2014, whilst promoting best management practices for oil palm cultivation and supporting the livelihood of local communities. We hope that the Global Environment Centre will continue its award-winning initiatives to protect and rehabilitate peat lands, mangroves and rivers through multi-stakeholder partnerships across Malaysia and the region, to ensure a more concerted strategy towards addressing environmental issues sustainably.



**Hjeh Yatela
Zainal Abidin**

CEO

YAYASAN SIME DARBY

GEC has been championing the protection and restoration of Kuala Langat North Forest Reserve (KLNFR) which had been badly razed by fire, caused by irresponsible human actions and dry weather. They too have helped raise the sustenance of local Orang Asli within KLNFR by instilling good agronomic practices on peatland, building earnings through establishment of sapling nurseries as well as empowering their children with an understanding of forest conservation. They have set an excellent example for environmental and social responsibility. BOH is delighted to have shared the journey to save KLNFR, the neighbour to one of our estates, in a unique two years partnership programme with GEC. It has been an amazing journey so far and we look forward to continuing our collaboration. Congratulations on achieving this important milestone and best wishes for the next 20 years!



Caroline Russell
CEO

BOH PLANTATIONS SDN BHD

In writing this about GEC's contribution to environmental conservation, I'm reminded of words written by Jennifer Skiff, Author, 'The history of the world will, one day, be defined by the people who witnessed the tragedy of impending extinction and were able to turn humanity's destructive patterns into creative solutions.' Congratulations on being one of the groups that effectively provide practical solutions and methods to help rehabilitate, protect and conserve our planet.



Dr. Surina Ismail
Group Head of Sustainability

IOI CORPORATION BERHAD

GEC is our strategic partner in peatland advisory and provides guidance on peatland management and rehabilitation to our suppliers. GEC has the ability to connect with the people on the ground, translating theory into practice. This is the key to create solutions that last.



Ben Vreeburg
Sustainability Director and team

BUNGE LODERS CROKLAAN

We are so proud of our collaboration with Global Environment Centre (GEC) to help restore portions of the Raja Musa Forest Reserve. Innisfree's success is contingent on our ability to bottle the goodness from Jeju Island, but we know for as much as we take - it's our responsibility to return what we can to nature. We are fortunate that GEC has extended a helping hand to allow us to achieve this mission of ours. We recognise peat swamp forests for the important role they play in maintaining our environment and commend the GEC team for devoting themselves to the cause.



Johnny Nam
Brand General Manager

INNISFREE MALAYSIA

Our heartfelt congratulations to GEC on your 20th anniversary! We had a wonderful journey with GEC and your dedicated team over the last five years in various projects especially on river conservation programmes in Taman Melawati and Klang Valley as well as the Environmental Education programmes for school children. Thank you for the support and friendship. We wish GEC and the team more success in the future in conserving our Mother Earth.



Ir Dr Dhileepan Nair
Chairman

**SOCIETY OF
ECO GREATER MELAWATI**

Congratulations to GEC on your 20th anniversary. We have been working with GEC under the ROLPOP programme for 5 years since 2014. Our river was once filled with all types of waste but has transformed into a recreational place for the community. Local communities are now empowered to clean-up the river and drains as well as recycling. Alhamdulillah, we have since practised what has been taught and the neighbourhood which was once had a high rate of dengue fever is now free from dengue. Thank you GEC for the support and guidance.



**Mohamad Halim
Bin Mohamad Said**
Chairman

**KRT RUMAH PANGSA AU2
TAMAN KERAMAT**

Congratulations to GEC on their 20th anniversary celebration. 13 years of collaboration has brought significant change in Kuala Gula Mangrove Forest conservation and raised awareness on the importance of mangrove among local community especially Kampung Kuala Gula. Such awareness has increased socio-economy of local communities especially among fishermen. Today, SHBKG under guidance from GEC is actively rehabilitating 100 hectares of degraded Kuala Gula mangrove forest by planting 300,000 mangrove trees. We are proud and thankful to GEC for their relentless effort in empowering the community to care for the mangrove forest.



Puji Astuti Binti Ismaun

Chair

**SAHABAT HUTAN BAKAU
KUALA GULA**

Congratulations to GEC on the 20th anniversary celebration. GEC's presence in Tanjung Surat Island has shaped a new outlook to the fishermen and local community on the environment. GEC and Aramco's initiative in conducting various programmes and the establishment of SHBTS has raised awareness and understanding on the importance of rehabilitating mangrove forest for the benefit of local community and future generations. May GEC continue to find success and together with SHBTS, we strive to realise our dream to increase the socio-economy of local communities towards a sustainable future.



Afidah Bt Md Dali

Chair

**SAHABAT HUTAN BAKAU
TANJUNG SURAT**

Congratulations to GEC on the 20th anniversary celebration. GEC's involvement with Sahabat Hutan Bakau Kampung Dato' Hormat has lifted up the local community's hope to rehabilitate and conserve degraded areas along the Sungai Bernam in Kampung Dato' Hormat. We hope that GEC will continue to find success and achieve many more milestones.



Omar Bin Muslim

Chair

**SAHABAT HUTAN BAKAU
KAMPUNG DATO HORMAT**

We would like to express our appreciation to GEC for empowering the local community with the establishment of SHGSU through collaboration with government agencies, corporates and NGOs. This collaboration is supporting the government's plan to rehabilitate North Selangor Peat Swamp Forest. We are proud and will always cooperate with GEC to ensure every objective and effort can be accomplished successfully. Their relentless work to develop SHGSU and sustain North Selangor Peat Swamp Forest is the key to our current success. May GEC continue to find success from all of us at SHGSU.



Yusman Bin Istihat

Chair

**SAHABAT HUTAN GAMBUT
SELANGOR UTARA**

GEC together with SHBLS has successfully rehabilitated mangrove forest in Lekir Mukim, Manjung. GEC's collaboration with SHBLS has helped tremendously in raising awareness, knowledge and understanding among local communities on the importance of rehabilitating and conserving mangrove forest. Indirectly, this collaboration managed to deliver the voices of local communities at district and state level through diplomatic relations and benefits the communities' socio-economic and environmental balance. We hope that this collaboration will continue for generations to come.



A Hadi Kamil

Chair

**SAHABAT HUTAN BAKAU
LEKIR SETIAWAN**

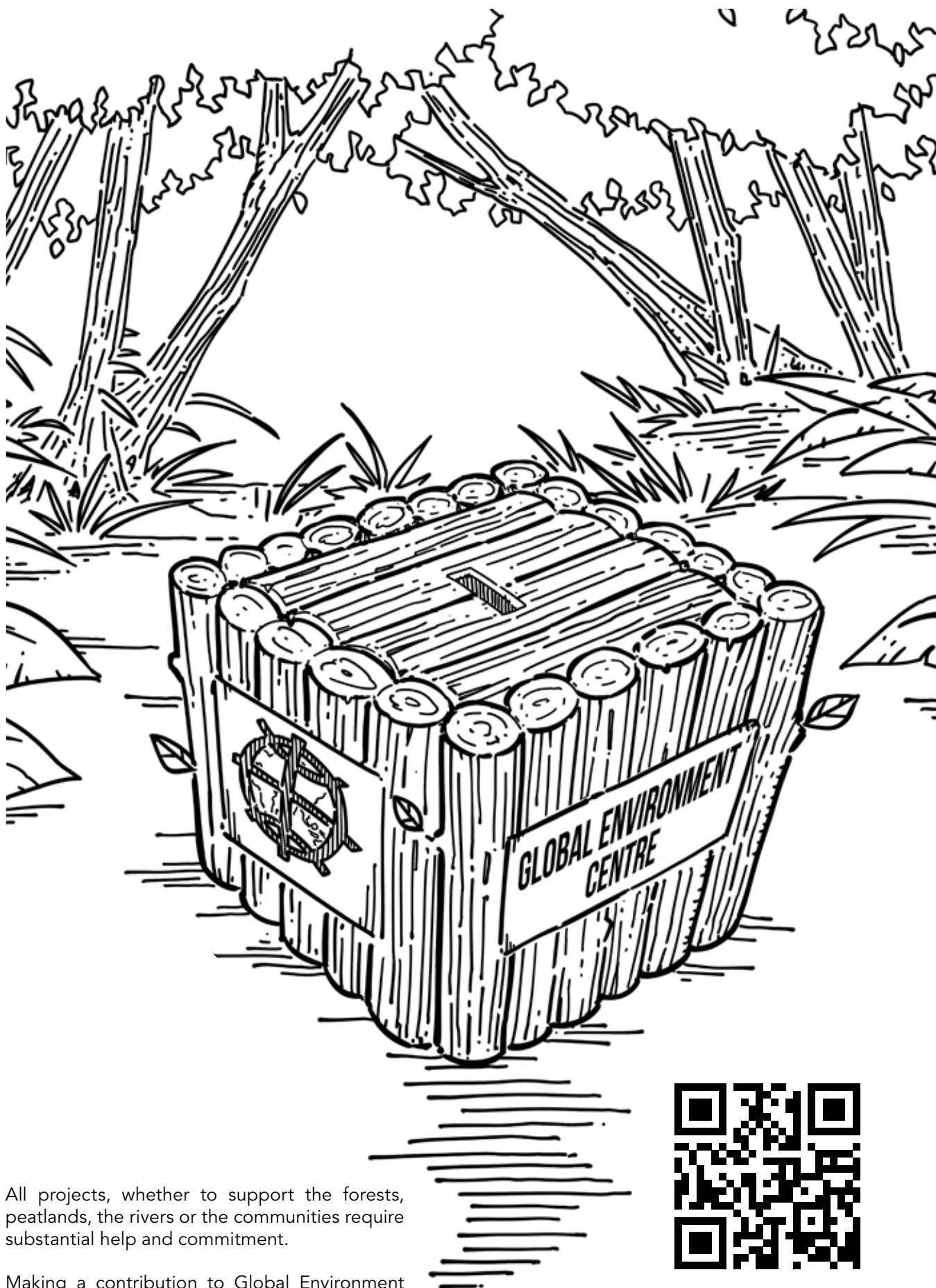
Thank you to GEC for their effort in empowering the local community specifically "Orang Asli Temuan" in Tanjung Dua Belas Mukim. The collaboration between GEC and SHGKLU has been running for 4 years and has successfully empowered the local community by raising awareness and instilling the sense of care towards the environment. We hope that this collaboration can continue further to protect and rehabilitate North Kuala Langat Forest Reserve and the surrounding landscape together.



Nanut Bin Atan

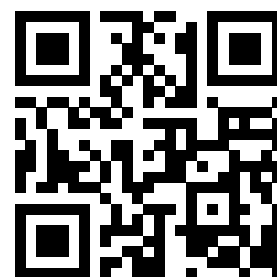
Chair

**SAHABAT HUTAN GAMBUT
KUALA LANGAT UTARA**



All projects, whether to support the forests, peatlands, the rivers or the communities require substantial help and commitment.

Making a contribution to Global Environment Centre helps us continue creating sustainable projects and endeavours, with the betterment of the environment in mind at all times. This also helps kick start long-term environmental projects with local communities.



Donations to the GEC are tax deductible. Contributions can be made online: goo.gl/iFifSs

WWW.GEC.ORG.MY



20 years **AND BEYOND**

GEC has been paving the road for a sustainable environment for 20 years. Looking back, our road has been winding and bumpy but we have achieved key milestones together with our partners.

Our passion to protect the environment and promote sustainable use of natural resources will not cease but continue to become stronger. We believe that a small group of dedicated people is powerful enough to change the Earth into a greener and better place, provided we work in together.

For the next 20 years, GEC will continue in its efforts and together with partners will expand and enhance our impacts.

Join us on the journey!