

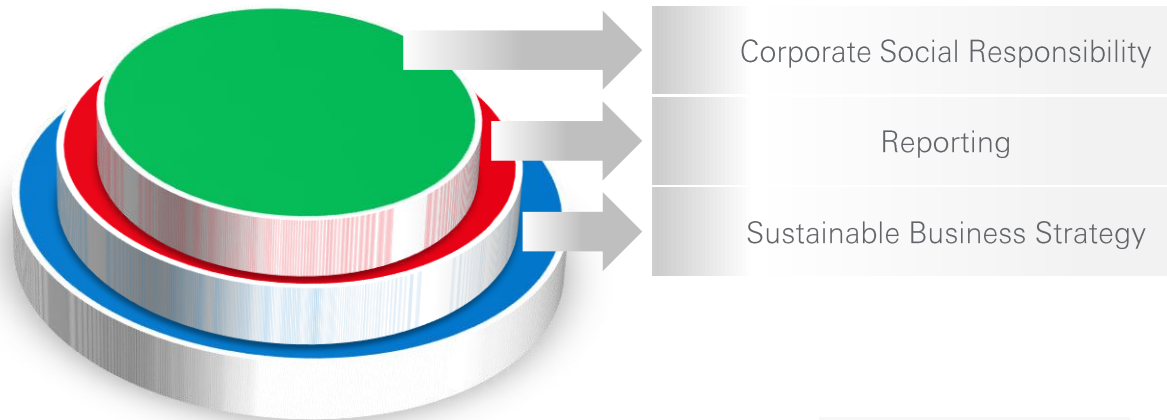
HSBC Amanah Malaysia Berhad



Realigning CSR to achieve UN SDG agenda

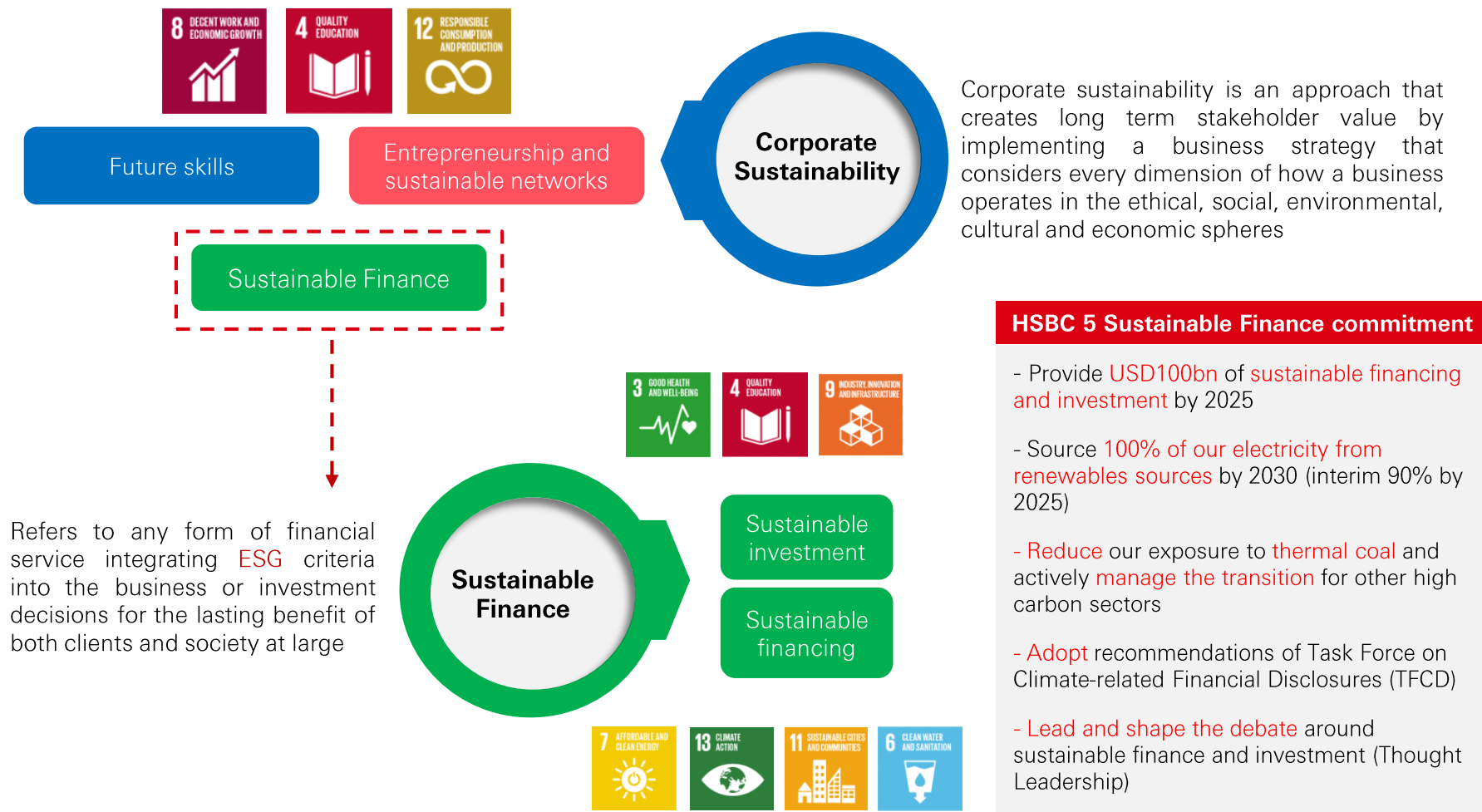
Traditionally, CSR targets issues outside of an organization's core business, and used its resources to tackle external issues identified. Decisions were not typically viewed as central to company's business interest. However, CSR position has since moved away from the orthodox view and evolved to be an important component to achieve UN SDG.

Responsible + Sustainable = Sustainability



HSBC Group Corporate Sustainability overview

At HSBC, it is important how business is conducted and sustainability sits at the core of HSBC strategic priorities where we rely on integrated approach to climate business and sustainability leveraging on HSBC's unique global presence and capabilities



United Nation SDG & HSBC

In September 2015, the United Nations Sustainable Development Goals, known as the SDGs, were launched. A framework to end poverty and reverse human impacts for a more sustainable planet by 2050. The SDGs call for collaboration between all sectors: private, public, grass roots and governments.

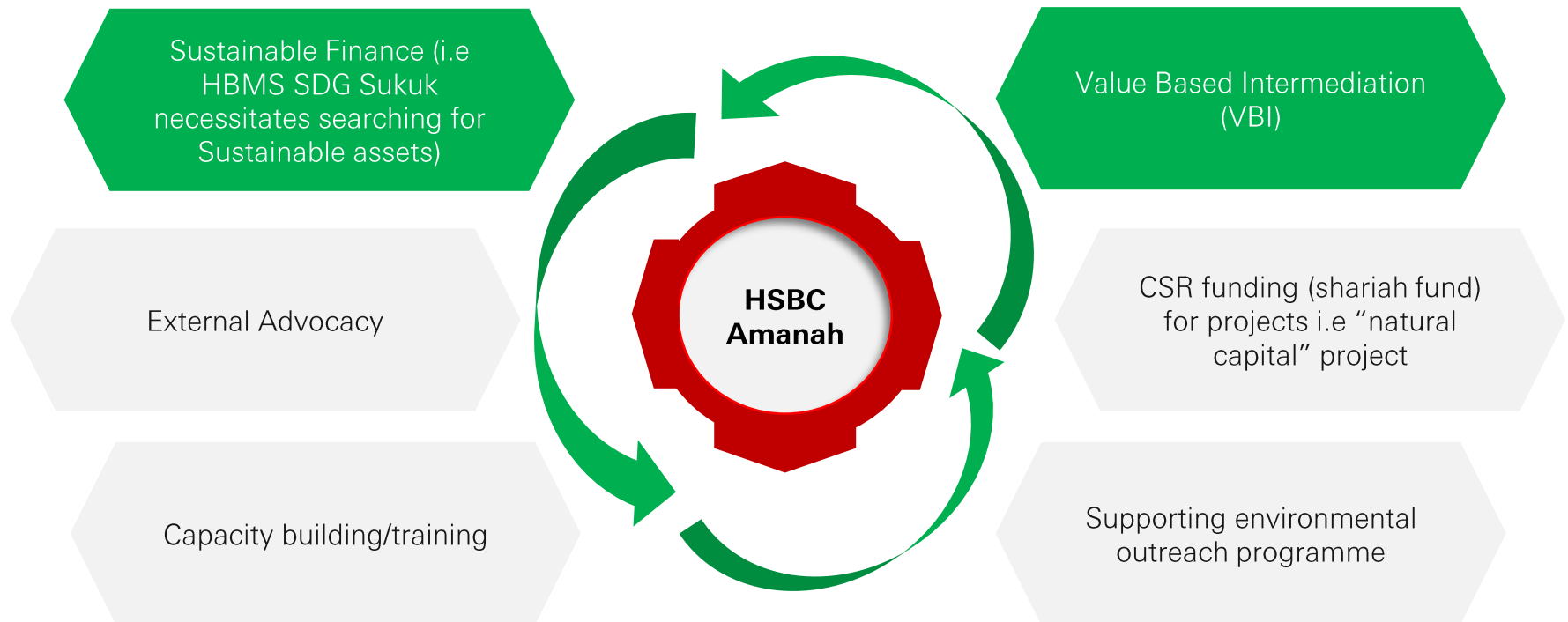
The HSBC adopted SDG Bond Framework is an example of our strategic commitment to sustainability and support for our customers and clients in this important area.

- Proceeds from the issuance of bonds which comply with the SDG Bond Framework will be used in defined Eligible Sectors relating to the SDGs as specified, further information on governance, reporting and indicative portfolio is provided on the following pages
- The defined Eligible Sectors under the HSBC SDG Framework are outlined in red as per below:



HSBC Amanah: Our sustainability journey

HSBC Amanah has always recognize the need to lend corporate support to advance social and environmental causes, however the bank has recently amplified its effort by taking account environmental and social consideration into its corporate strategy through its Group strategy as well as Bank Negara's Value Based Intermediation (VBI) initiative.



Creating Sustainable Economic Growth - Examples of activities Supported

As a leading financial institution, HSBC upholds its commitments to continuously forge meaningful relationships with the local communities where we operate, through sustainable and effective engagement initiatives. Since 2011, HSBC Malaysia has been partnering with GEC in many environment conservation projects.

Some of HSBC Malaysia major initiatives include:

- Sungai Pinang River Care Programme (2011-2016)
- Water Conservation Programme for Schools in Malaysia (2014-2016)
- Raja Musa Forest Reserve Peatland Rehabilitation Programme (2011 – 2019)

Other initiatives on environmental outreach programme supported by HSBC Malaysia:

- Kuala Selangor Nature Park as a Centre of Excellence for Environmental Education (2013) – [Project Partner : Malaysian Nature Society \(MNS\)](#)
- Rainforest Carbon Research Project (2009-2013) – [Project Partner : South-east Asia Rainforest Research Programme \(SEARRP\)](#)
- WWF Building Resilient of Fresh Water Sources (2010-2013) – [Project Partner : WWF-Malaysia](#)
- WWF Fresh Water Ecosystem Conservation in Sabah (2017) – [Project Partner : WWF-Malaysia](#)
- Building Resources & Capacity for Environmental Awareness in Sabah – [Project Partner : Sabah Environment Trust \(TRUST\)](#)
- Sustainable Palm Oil : Living Landscape Programme (2018-2019) – [Project Partner : WWF-Malaysia](#)

Raja Musa Forest Rehabilitation Centre

RESTORATION OF NORTH SELANGOR PEAT SWAMP FOREST THROUGH COMMUNITY BASED PEATLANDS WATER MANAGEMENT AND REHABILITATION 2011 - 2019



SHGSU and GEC-CoSPeC establishment for Raja Musa Forest rehabilitation programme



GEC-CoSPeC
Opening Day & GEC
Raya Open House



SHAREHOLDERS WORKSHOP ABOUT
CURRENT STATUS AND FUTURE
AGRICULTURE IN KUALA
SELANGOR WITH LOCAL COMMUNITY

SHGSU
AGM 2018

REHABILITATION STRATEGY THROUGH HYDROLOGY MANAGEMENT AND ARTIFICIAL PLANTING AS WELL AS NATURAL FOREST REGENERATION IN FOREST RESERVE

HSBC Tree Planting



Monthly Tree Planting



Canal Blocking Construction



HSBC Rehabilitation Site



FIRE PREVENTION AND OUTREACH PROGRAMME

Updating Fire Danger Rating System (FDRS) Signboard Color Code



Piezometer installation & water table data collection



Patrolling And Monitoring At Vicinity Of RMFR From FC 102 – Fc 82



Fire Suppression



IMPLEMENTATION OF PFR PROGRAMME

Monthly Meeting



Production of PFR Education book & poster



School Talks



Annual Camp



DEVELOPMENT OF SUSTAINABLE ALTERNATIVE LIVELIHOOD PROGRAMME

SHGSU Nursery



SHGSU Product



BMP workshop & Site

