



20 years of Building Partnerships for the Environment

Faizal Parish, Director of GEC

APRIL 23, 2019, KL PAC

Outline

- **GEC**
- **Programmes**
- **History**
- **New Approaches**
- **Key achievements**

Global Environment Centre

- **Malaysian Non-Profit Organisation** established 1998.
- HQ in Petaling Jaya, Selangor
- Working in all **ASEAN Member States and at international level**
- Specialised on **multi-stakeholder approach** in peatland, forest and river management
- Working with Government, Private Sector, Education and Research Institutions, CSOs and Community Groups
- Governed by Board of Management and Advisory Council
- More than **220 projects in 20 countries with 160 partners**
- **80,000** volunteers, participants and beneficiaries

MISSION

- To support the **protection of the environment** and **sustainable use of natural resources** to meet local, regional and global needs, through **strategic partnerships** with **communities** and like-minded organizations.
- Tagline: **Building Partnerships for the Environment**



Objectives

- Promote integrated management of **biodiversity and water resources** with a focus on community involvement and biodiversity conservation
- Promote the protection and sustainable use of **forests and wetlands** with a focus on integrated management for biodiversity and climate change
- Enhance awareness, understanding and **capacity as well as partnerships** between different organisations and sectors to address environmental issues





PROGRAMMES

RIVER CARE

- river rehabilitation, water conservation, IRBM

FOREST & COASTAL

- forest & wetlands rehabilitation, sustainable management , biodiversity protection, climate change mitigation

PEATLAND

- sustainable management of peatlands, climate change mitigation, haze prevention

OUTREACH & PARTNERSHIP

- capacity building, awareness raising, info exchange

Milestones

- 1998 Establishment
- 2000 Appointed by CBD to facilitate global **River Basin Initiative**
- 2003 Founding partner of **ASEAN Peatland Management Initiative**
- 2004 **SMART Ranger** and **River Ranger** Programme initiated in Malaysia
- 2004-2007 Integrated mgt of **peatlands for Biodiversity and climate change**
- 2005 Initiated **Community-based mangrove management** after Asian Tsunami
- **2007 Initiated WATER project in Smart partnership with private sector**
- **2008 Global Assessment on Peatlands, Biodiversity and Climate Change** recognised by 180 countries
- 2009 GEC elected as Central Focal Point of the **GEF CSO Network**
- 2009-2014 Facilitated **ASEAN Peatland Forests Project**
- 2010-2015 Executed **SEApeat Project** in ASEAN region
- 2011- now led two phases of **Public Outreach Programme for River of Life Initiative**
- 2018 **GEC's 20th Anniversary**

GEC IS THE



**FOUNDING
COLLABORATIVE
PARTNER OF**

**ASEAN
PEATLAND
MANAGEMENT
INITIATIVE**

&

**ASEAN
PEATLAND
MANAGEMENT
STRATEGY**

**which provides a roadmap
for peatland management
in...**



**23
MILLION
HA OF
PEATLANDS
IN SEA**

**and continues providing
technical and operational
support to ASEAN
Member States.**

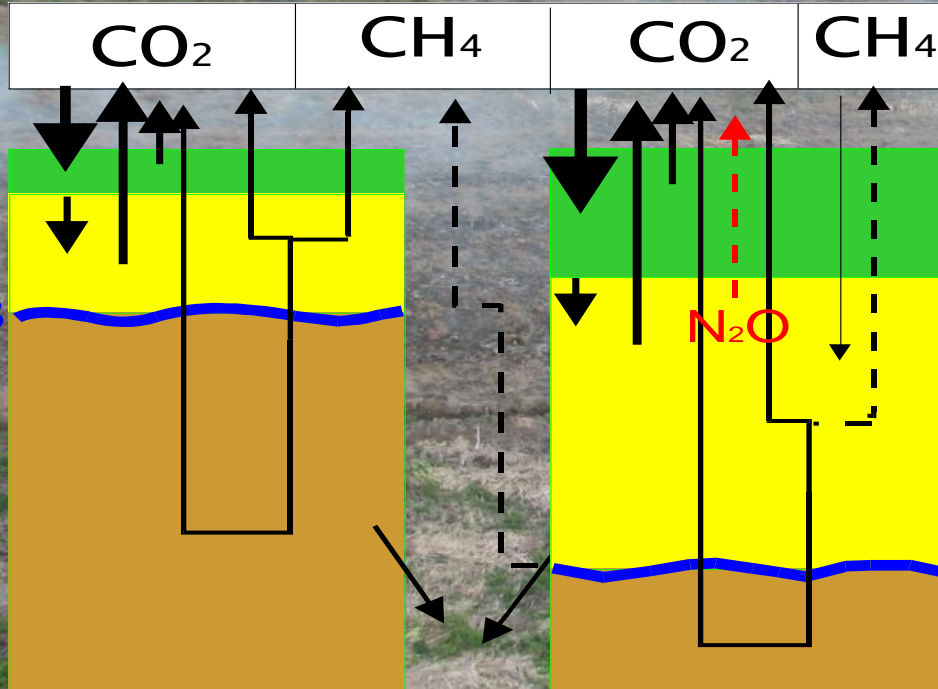
Assessed and promoted conservation of Peat Swamp Forests throughout ASEAN



Documented and Safeguarded Biodiversity



Highlighted role of peatlands in regulating climate



Promoted a shift from peatland fire-fighting to peatland fire prevention



2003 - Introduced peatland rewetting in Indonesia

Forest in Indonesia



Blocking of canals

2014



2016



2005 Showcased peatland restoration in Tibetan plateau



Introduced ecological restoration approaches



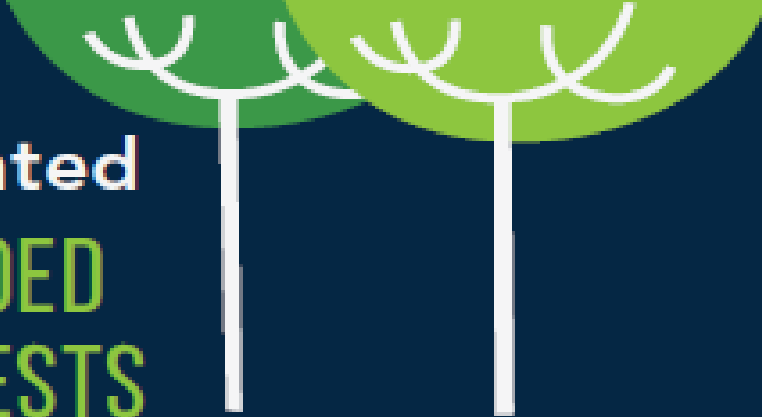
Through best management practices, GEC has rehabilitated

>200 HECTARES DEGRADED
PEAT SWAMP FORESTS

300,000
TREES PLANTED



WITH
30,000
VOLUNTEERS
(civil societies &
corporate bodies)



Developed US\$250 million ASEAN Programme on Sustainable Management of Peatland Ecosystems 2014-2020



- All peatland areas identified and **inventorized**;
- **Zero-burning** uniformly practiced to prevent any uncontrolled wildfires on peatlands,
- Fire prone sites **rehabilitated** by focusing on root causes of fire,
- Peatlands **sustainably managed**, livelihoods enhanced and sustainable use mainstreamed;
- Peatlands **conserved** to contribute to significantly reduced emissions of greenhouse gases and increased peatland biodiversity in the region;
- **APMS and NAPs** implemented; national and regional capacity enhanced

ASEAN PROGRAMME
ON SUSTAINABLE MANAGEMENT
OF PEATLAND ECOSYSTEMS 2014-2020
(APSMPE)

Documented Best Management Practices for RSPO

RSPO MANUAL ON BEST MANAGEMENT PRACTICES (BMPs)

FOR MANAGEMENT AND REHABILITATION
OF NATURAL VEGETATION ASSOCIATED
WITH OIL PALM CULTIVATION ON PEAT

SUPPORTED BY



RSPO

Roundtable on Sustainable Palm Oil

Demonstrated sustainable community livelihoods



Established 500,000 ha landscape programme in Kalimantan



Empowered more than 85 community groups



Planted 550,000 trees with 54,000 volunteers



GEC has rehabilitated

>100 HECTARES DEGRADED
MANGROVE AREAS

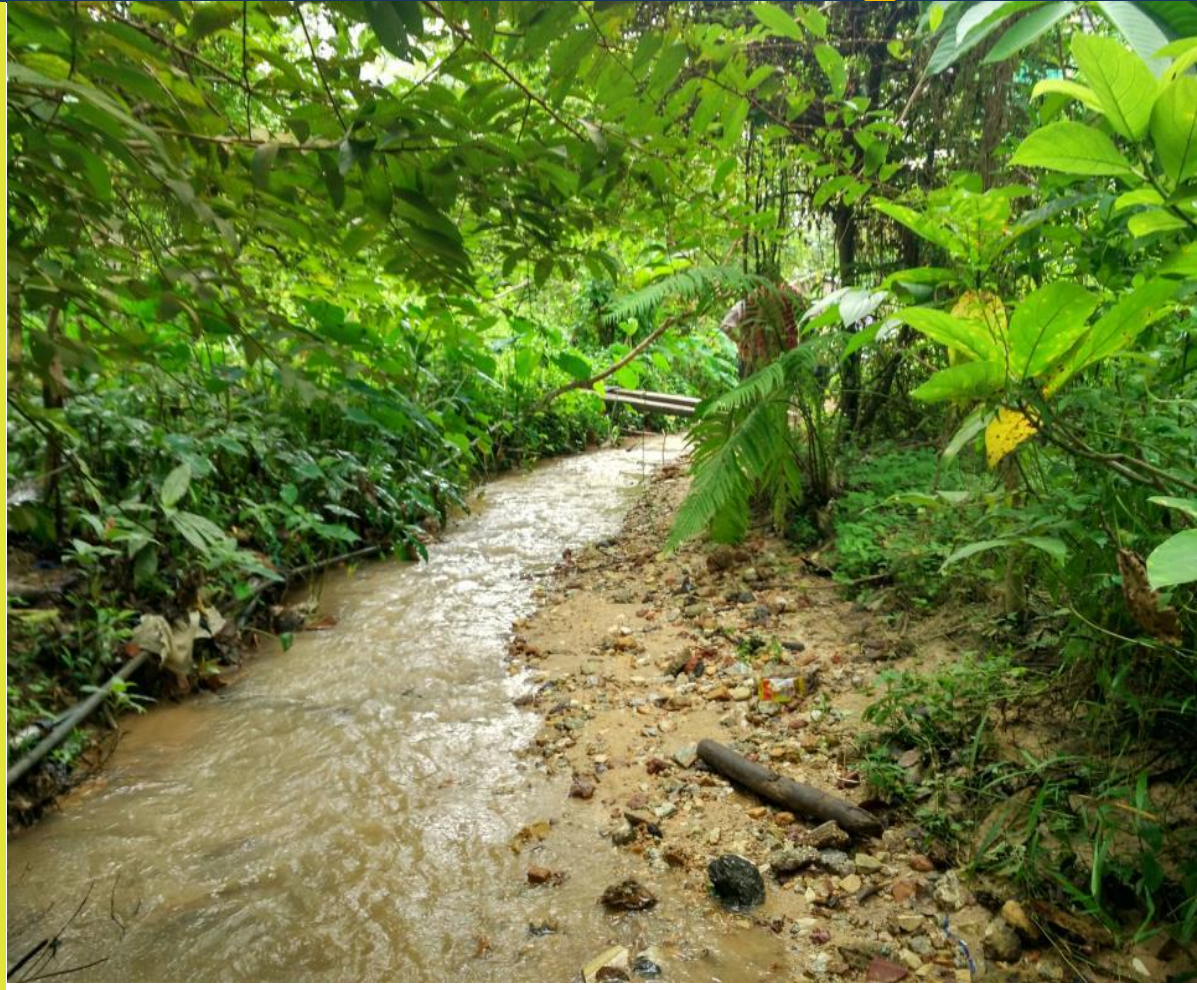
250,000
TREES PLANTED



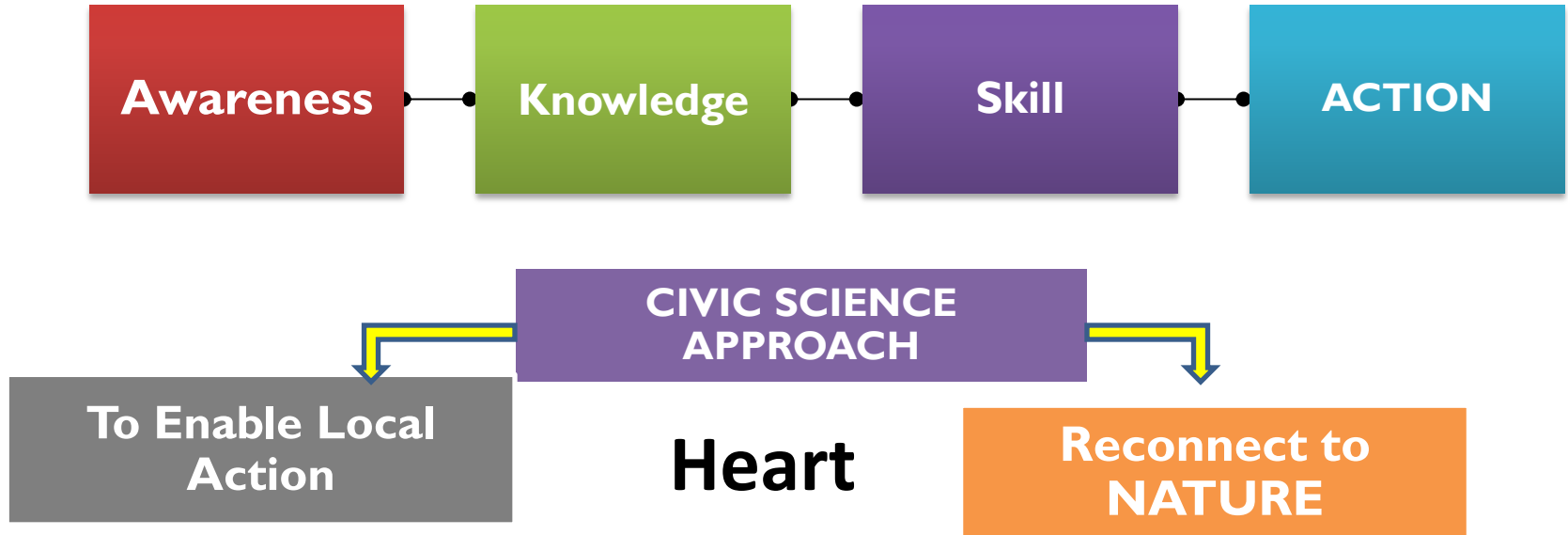
WITH
24,000
VOLUNTEERS
(local communities,
public & corporate
bodies)



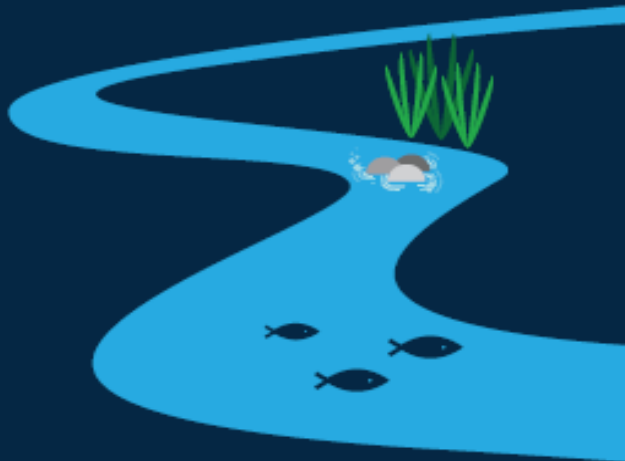
Promoted Integrated River Basin Management



Introduced Civic science (Heart approach)



Together with our partners, GEC has been supporting



river rehabilitation work and biological restoration as well as the protection and conservation of water catchments.



Cleaned up 30 river sections and lakes with 100 partners



Sg Pencala 2000

Sg Pencala 2017

Established 10 training centres and open classrooms



RIVER OPEN CLASSROOM

Established National River Care Fund



Showcased Results at more than 50 Global Fora



Led global GEF CSO Network in 120 countries for 8 years



The next 20 years

- Eliminate transboundary haze in ASEAN
- Global partnership for tropical peatlands
- Conserve our water resources
- Protect forests and peatland biodiversity
- Regional movements for forest and river restoration
- Achieve Zero Waste and Circular Economy
- Achieve Zero Net Emission

Let us build a Partnership for the Planet

